

Emission Control

Domestic fires
653

Industry
123

Open burning
139



The New Zealand Herald

National World Business Sport Technology

National

Pollution kills 1170 a year - study

By Martin Johnston

5:30 AM Tuesday Jul 24, 2012

\$4.28 billion in social cost

Coal boilers and fire places, wood burners and inefficient wood/biomass boilers are air polluters, and in many cases will worsen air quality in the communities and regions where they are constructed.

EARLY DEATHS THROUGH POLLUTION

People 30 years and over, 2006	Domestic fires	Motor vehicles	Industry	Open burning
Auckland	112	126	22	31
Bay of Plenty	35	14	10	10
Canterbury	187	45	40	6
Gisborne	4	0	0	2
Hawkes Bay	41	7	9	12
Manawatu-Wanganui	30	7	0	11
Northland	17	5	8	8
Otago	58	11	19	3
Taranaki	18	6	0	10
Waikato	44	12	9	17
Wellington	43	13	0	19
NATIONAL*	653	255	123	139

*Not all regions included in table. Source: HAPINZ / HERALD GRAPHIC

Emission Control

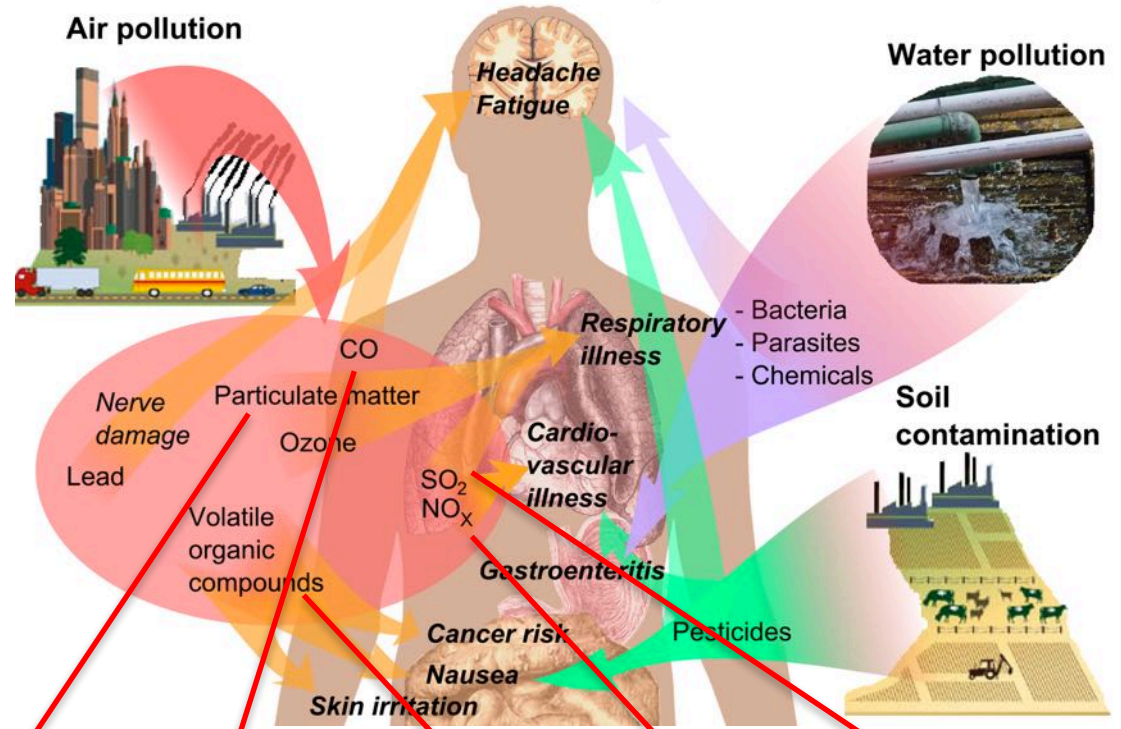


Guidance for local authorities
PM₁₀ emissions from wood fuels



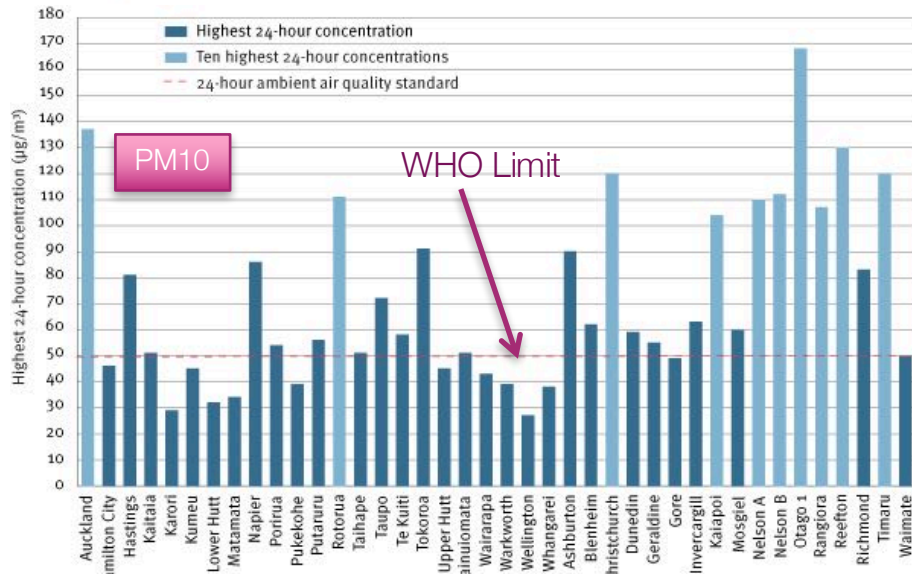
Inspiring energy efficiency - advancing renewable energy

Health effects of pollution



		O ₂ [Vol.%]	TPM [mg/m ³]	CO [mg/m ³]	Org. C [mg/m ³]	NO _x [mg/m ³]	SO ₂ [mg/m ³]
GER	1-2.5 MW	11	100	150	10	250	NA for wood
	2.5-5 MW	11	50	150	10	250	NA for wood
	5-50 MW	11	20	150	10	250	NA for wood
CH	>1 MW	11	10-20	150 - 250	50	150 - 250	NA for wood
NZ		8.5	25* - 250	No limit	No limit	No limit	No limit

Emission Control



Number of times New Zealand airsheds exceeded the PM₁₀ standard, 2007

