

From Poo to You – Safe Biomethane

11th September 2023



advisian.com





Introducing the speakers



Sheila Wujanto-Hawe

Process Safety Engineer

Gas Markets Team

Jemena



Ruslan Davletgareev

Integration Manager

Malabar Biomethane Injection Project

Jemena




Andrea Hosey

Managing Consultant

Chemicals and Future Fuels

Advisian (Part of Worley Group)



Fact Sheet: Malabar Biomethane Injection Project



Australia's first biomethane-to-gas network project will see thousands of Sydney customers using renewable gas, sourced from biowaste and blended with natural gas, for cooking, heating and hot water.

.....
Jemena and Sydney Water are working together to generate biomethane at the Malabar wastewater treatment plant in South Sydney. The high quality biomethane gas will be injected into Jemena's New South Wales gas distribution network – the largest in Australia with around 1.5 million customers.

Initially, the Malabar facility will produce renewable biomethane (by volume) equivalent to the gas usage of approx. 6,300 homes per year with the potential to scale up to around 200TJs each year – equivalent to the natural gas usage of approx. 13,300 NSW homes per year, if put to use in the residential network.

The multi-million dollar project is jointly funded by Jemena and the Australian Renewable Energy Agency (ARENA) who will provide up to \$5.9 million in grant funding.



What's the difference Biogas - Biomethane

Biogas

Biogas is the gas created when organic waste is decomposed in an oxygen-deprived environment through a process called anaerobic digestion. The biogas composition produced by anaerobic digestion depends on the starting organic materials and bugs but generally contains methane (typically 50 – 75%), CO₂ (25 -50%), organics, nitrogen, and H₂S.

Holds the potential to be a “renewable” replacement for natural gas as due to its naturally occurring nature and its easy adaptation to the current gas infrastructure.

Sometimes called “green gas” and “renewable gas”.

Biomethane

Biomethane is the term generally used with the biogas is upgraded to remove the CO₂ and other contaminants to concentrations of up to 98% methane.





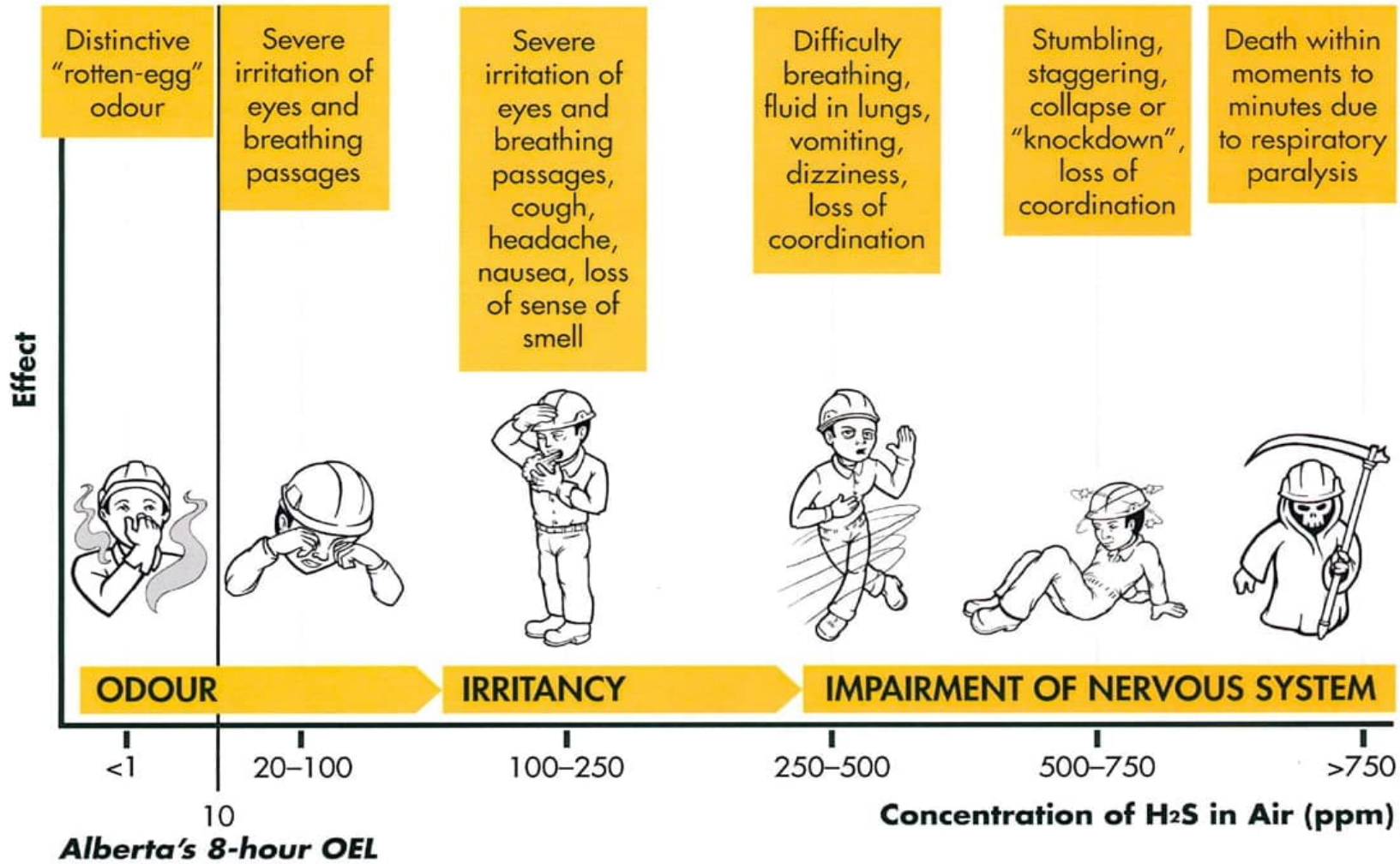
Safety Properties H₂S

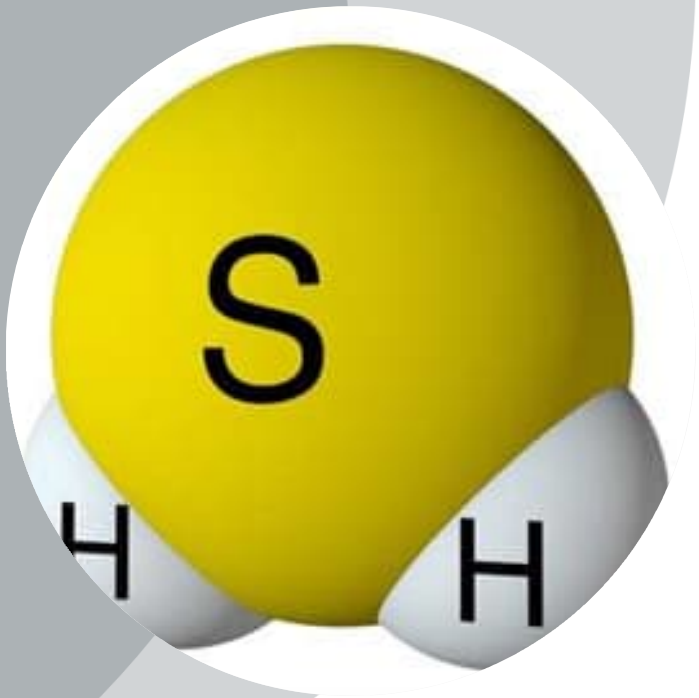
The biogas produced by anaerobic digestion contains methane, CO₂, organics and up to 1500ppm of H₂S. For comparison the gas pipeline specification is for less than the 10ppm (generally 5.7 mg/m³). Gas quality as defined by AS 4564:2020.

H ₂ S Concentration, ppm	Health Effects	Official Exposure Limits
<.005	Threshold of smell (rotten eggs); normal background levels	
10	Not known health effects after daily exposure	TWA: Standard for a work period as per Worksafe Australia.
15	Start of eye irritation	STEL: Not to be exceeded in any 15-minute period as per Worksafe Australia.
20-50	Eye pain, headache, nausea, coughing	
50-100	Loss of smell after a few minutes, unconsciousness	
100	The maximum concentration from which a person could escape within 30 minutes without experiencing any irreversible health effects	IDLH: As defined by the NIOSH (US).
200-300	May produce unconsciousness and death in 1 to 4 hours of exposure	
500-700	Causes dizziness, potential collapse within 5 minutes	
700-1000	Rapidly becoming unconsciousness resulting in death within a few minutes.	
1000-2000	Immediately unconsciousness with no respiration, resulting in death.	

- **Highly toxic** – loss of consciousness after at low levels, respiratory paralysis and death
- **Flammable** – It's a flammable gas and the explosive mixture has a wider concentration range than methane
- **Corrosive** – concentration needs to be considered during material selection (NACE requirements)
- **It is heavier than air** – hence can accumulate in low lying areas, particularly confined spaces such as pits.
- **Smell** - It smells like rotten eggs at low concentrations but at higher concentrations it paralyses the olfactory nerve in the nose and hence destroys the sense of smell.
- **Colour** - It is a colourless gas so no visible sign of detection

EFFECTS OF H₂S EXPOSURE





It can't happen to me!



Safety Moment

Hydrogen Sulfide Toxicity: Aghorn (Tx) Waterflood Station Incident

Description

- On October 26, 2019, an employee of a waterflood station responded to a produced water pump oil level alarm. The employee isolated the pump from the process but did not perform lockout/tagout (LOTO) to cut the pump off from energy sources. On the night of the incident, the pump automatically turned on, and water containing gas was released from the pump. The employee died from exposure to the gas.
- The employee's wife later entered the waterflood station through a routinely unlocked gate to search for her husband. She was exposed to the released H₂S and also died.

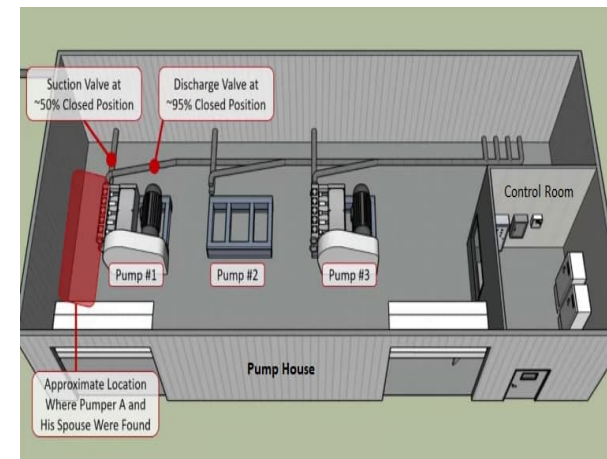
Insights and learning

- Hydrogen sulfide (H₂S) is a flammable, colorless gas with a characteristic odor of rotten egg. H₂S is both an irritant and a chemical asphyxiant with effects on both oxygen utilization and the central nervous system and could lead to death in high concentrations.

Concentration	Symptoms/Effects
0.0005 to 0.3 ppm	Rotten egg smell is first noticeable
100-150 ppm	Loss of smell
500-700 ppm	Collapse in 5 minutes. Death after 30-60 minutes.
700-1000 ppm	Rapid unconsciousness, immediate collapse within 1 to 2 breaths. Death within minutes.
1000-2000 ppm	Nearly instant death

References

- <https://www.csb.gov/csb-releases-final-aghorn-investigation-report/>





Safety Moment

Hydrogen Sulfide Toxicity: Aghorn (Tx) Waterflood Station Incident

Description

Five safety violations contributed to these fatalities:

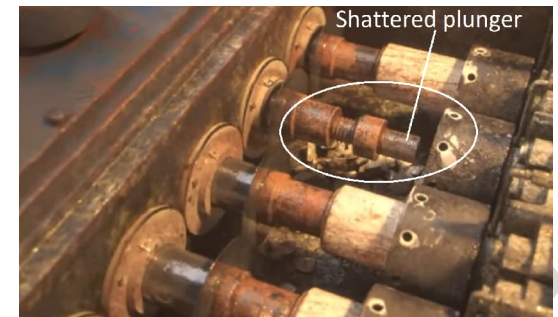
- Nonuse of PPE (personal H₂S detector & alarm device) by the employee. He left it in the car in alarm condition upon entering the pumphouse.
- Nonperformance of lockout/tagout (LOTO)
- Inadequate ventilation of the pump house
- Nonfunctioning H₂S Detection and Alarm System
- Lack of Safety Management Program
- Deficient Site Security : Unlocked gates allowed the employee's wife to directly enter the pumphouse exposing her to lethal levels of H₂S.

Insights and learning

- In oil and gas industry, contact with H₂S can occur due to leaks or mismanagement in hydrocarbon transport systems.
- Explain to workers and visitors the hazards of H₂S.
- Conduct H₂S safety training often and enforce safety management programme.
- Wear personal H₂S detectors before entering work area and during work.
- Be aware of the wind direction. Act on alarms and move to safety.
- Follow and implement LOTO procedures.

References

1. <https://www.csb.gov/csb-releases-final-aghorn-investigation-report/>



Process Safety Fundamentals



“Be aware not alarmed”

Reference:

- IOGP Report 638: Process Safety Fundamentals

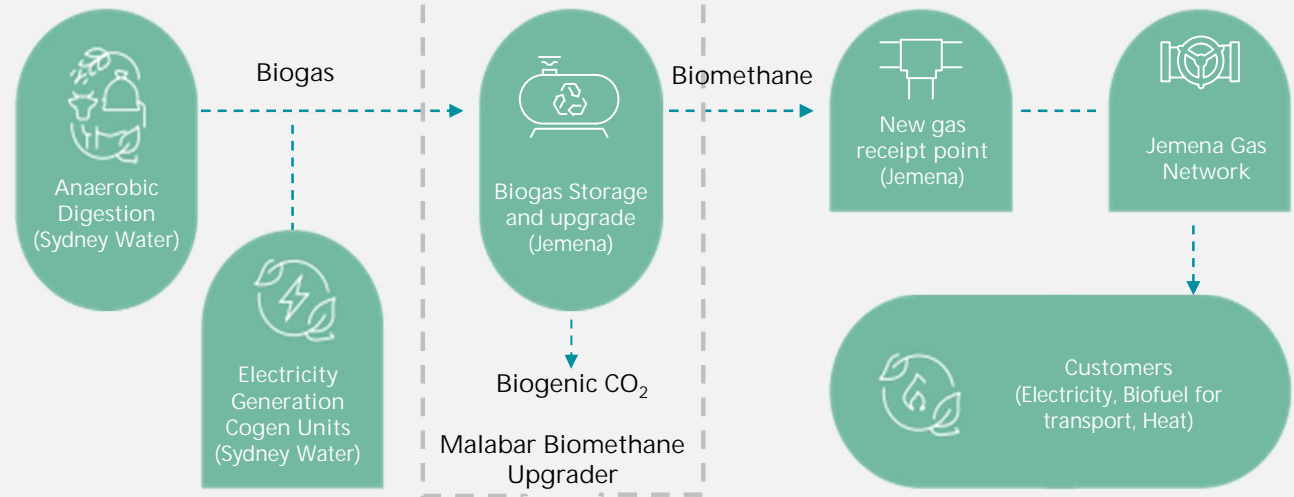


Case Study

Malabar Biomethane Injection Facility

Biomethane produced at Malabar will displace natural gas when it is injected into the gas network.

Methane is captured, optimised and re-used, instead of being naturally released into the atmosphere from its original waste source, so there are no additional emissions in the production process.

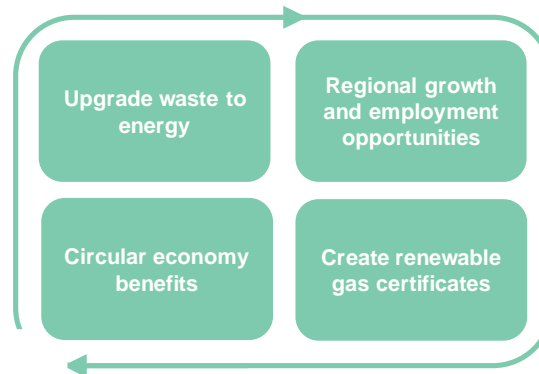


Biomethane: Boosting the Circular Economy

Biomethane is an example of waste recovery and reuse in the circular economy. It can be created by capturing biogas from decomposing agricultural, organic, and domestic waste, and removing the carbon dioxide. At our Malabar facility biomethane will be produced from wastewater, or biowaste.

Biomethane is indistinguishable to regular natural gas. It can be blended seamlessly into the existing Jemena gas network, and could provide enough renewable energy to supply thousands of homes and businesses.

The Malabar Biomethane facility will demonstrate the potential of a waste-to-energy industry which can reduce carbon emissions by replacing other natural gas sources, while creating jobs and many other circular economy benefits.



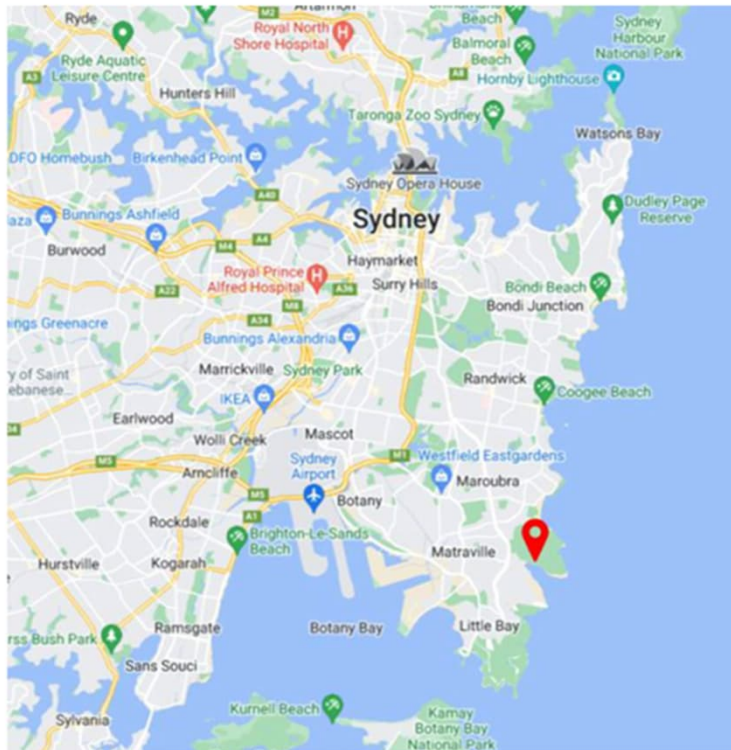
According to ARENA's Bioenergy Roadmap 2021, the Australian bioenergy sector could contribute:

	By the 2030's	By the 2050's
Additional \$ GDP	\$ 10 billion	\$ 14 billion
Additional Jobs	26,200	35,300
Emission Reduction (% of 2019 levels)	9%	12%
Extra landfill waste diverted (vs 2019 levels)	6%	7%

Malabar Biomethane Injection Project - Location

The Malabar Biomethane Injection plant is located at Fishermans Road Malabar at the Sydney Water Malabar Treatment plant. The project is a joint initiative between Sydney Water and Jemena and has ARENA funding.

The biogas was originally used to produce electricity for use at the Sydney water facility and the new facility upgrades the gas to biomethane for injection into the gas pipeline network.





Facility Overview

The Malabar Biomethane Injection Project receives low pressure gas from the Sydney Water anaerobic digesters. Biogas is stored in a low pressure biodome, around 4 KPag prior to being sent through pretreatment to remove hydrogen sulphide, liquids and other organic compounds, compressing and upgrading (CO₂ removal) and injection into the gas network.

The Biomethane Plant comprises:

- Buffer Storage dome (Biodome)
- Odourant injection
- Gas blower to raise raw biogas to pre-treatment inlet pressure
- Cooler (liquid drop out)
- Activated carbon filter for H₂S removal
- Carbon filter vessel for removal of siloxanes and VOC's
- Compression (including cooling and further liquid drop out)
- Hollow fiber CO₂ removal membranes

Check out "From Poo to you" ARENA announcement for a video

of inflation of the biodome <https://arena.gov.au/blog/from-poo-to-you-biomethane-plant-opens/>







Renewable Gas

Supporting the energy transition

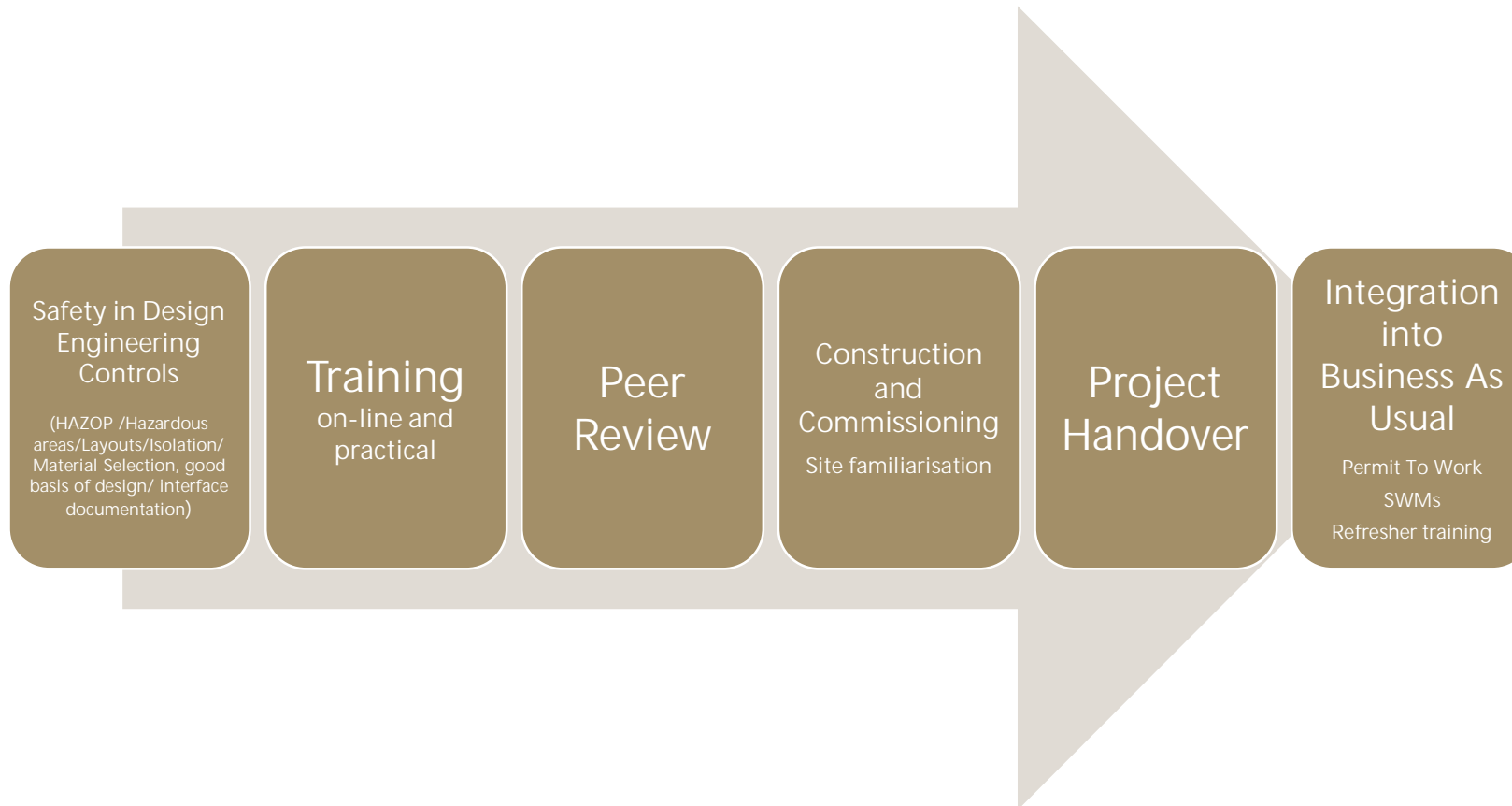
MITSUBISHI
HEAVY INDUSTRIES

↑
FIRE
EXTINGUISHER

DANGER

The Challenge

Introducing a new hazard into an operating company that normally only deals with sales spec gas.



Bow Tie Analysis

Engineering & Design

Training

Warning Signs

O & M Procedures

Hazard: Toxic Gas

LOC of H₂S

PPE & Gas Detectors

Emergency Response Plan

Rescue Procedure & Equipment

Preventative

Mitigative

Process Safety Management System

Any Questions?



Sheila Wujanto-Hawe
sheila.wujanto-hawe@jemena.com.au
www.jemena.com.au



Ruslan Davletgareev
ruslan.davletgareev@jemena.com.au
www.jemena.com.au



Andrea Hosey
andrea.hosey@advisian.com
www.advisian.com



Thank You – particularly to all involved in the project and supporting knowledge sharing.





DISCLAIMER

This presentation has been prepared by a representative of Advisian.

The presentation contains the professional and personal opinions of the presenter, which are given in good faith. As such, opinions presented herein may not always necessarily reflect the position of Advisian as a whole, its officers or executive.

Any forward-looking statements included in this presentation will involve subjective judgment and analysis and are subject to uncertainties, risks and contingencies—many of which are outside the control of, and may be unknown to, Advisian.

Advisian and all associated entities and representatives make no representation or warranty as to the accuracy, reliability or completeness of information in this document and do not take responsibility for updating any information or correcting any error or omission that may become apparent after this document has been issued.

To the extent permitted by law, Advisian and its officers, employees, related bodies and agents disclaim all liability—direct, indirect or consequential (and whether or not arising out of the negligence, default or lack of care of Advisian and/or any of its agents)—for any loss or damage suffered by a recipient or other persons arising out of, or in connection with, any use or reliance on this presentation or information.

PRIVACY NOTICE

Advisian is subject to various privacy laws. Advisian's Privacy Notice is included in this document. Additionally, information on how personal data provided by your organisation to Advisian is processed can be found at <https://www.advisian.com/en-us/who-we-are/privacy-policy>.

The information you provide as part of Advisian's business relationship with you will be used by or on behalf of Advisian and its affiliated companies and subsidiaries as part of the Worley Group (Group):

- To carry out due diligence on you and/or your company as a prospective counterparty to Advisian. This includes assessing financial standing, HSSE profile, technical and quality standards, and corruption/money laundering risk.
- If necessary, to enter into or perform our contract with you.
- To manage our services.

Advisian consults private risk intelligence databases and publicly available sources of information, such as sanction lists, on an ongoing basis in order to comply with its internal anti-money laundering, and bribery and corruption prevention processes, and to prevent, detect or investigate dishonesty, malpractice or seriously improper conduct.

If you choose to provide Advisian with personal information on directors, officers, employees and/or owners of your company or any third party's personal information (such as name, email or phone number), you represent that you have the relevant person's permission to do so.

We may share your information:

- With our third party service providers who perform business operations on our behalf.
- As part of a sale of a Group subsidiary or brand to another company.
- To protect and defend Advisian.
- When required by law and/or government authorities.

Given the global nature of Advisian and the Group's business, personal information may be transferred internationally for these purposes (but remains protected by the Group's Privacy Policy).

We retain your information:

- Only as long as is necessary for the purpose for which we obtained it and any other permitted linked purposes (for example, where relevant to the defense of a claim against us). So, if information is used for two purposes, we will retain it until the purpose with the latest period expires; but we will stop using it for the purpose with a shorter period once that period expires.
- In relation to your information used to perform any contractual obligation with you, we may retain that data whilst the contract remains in force plus seven (7) years to deal with any queries or claims thereafter.
- In relation to any information where we reasonably believe it will be necessary to defend or prosecute or make a claim against you, us or a third party, we may retain that data for as long as that claim could be pursued.

Our retention periods are based on business needs and your information that is no longer needed is either irreversibly anonymised (and the anonymised information may be retained) or securely destroyed.

If you do not wish to provide your personal information to us, we may not be able to proceed with a business relationship with you.

For further information on how your personal information is processed, please visit our website at www.advisian.com for further details on the Group's Privacy Policy.



advisian.com

